

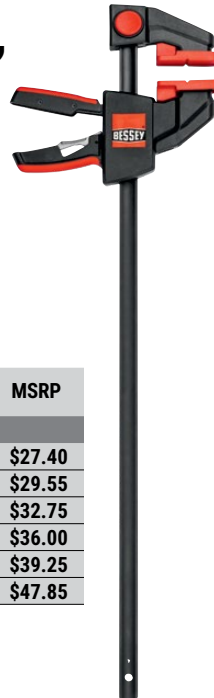
SIMPLY BETTER.



Q3 2025 Promotion

One-handed trigger clamps, EHK series

- Robust construction allows a clamping force to 600 lbs
- Large clamping surface
- Soft touch removable pads
- Ergonomic composite handle



Product Number	Clamping Capacity	Throat Depth	Clamping Force	Spreading Capacity	Approx. Weight	MSRP
	inch	inch	lbs	inch	lbs	
EHKXL06	6	3 5/8	600	7 1/2 - 12 1/4	2.37	\$27.40
EHKXL12	12	3 5/8	600	7 1/2 - 19 1/4	2.74	\$29.55
EHKXL18	18	3 5/8	600	7 1/2 - 24 1/4	3.10	\$32.75
EHKXL24	24	3 5/8	600	7 1/2 - 31 1/8	3.45	\$36.00
EHKXL36	36	3 5/8	600	7 1/2 - 42 3/4	4.17	\$39.25
EHKXL50	50	3 5/8	600	7 1/2 - 56 1/4	5.06	\$47.85



FROM
27⁴⁰

All-steel lever bar clamps

- Secure, unaffected by vibrations
- Strong – high clamping force
- Non-slip trigger release
- Patented profiled rail



Product Number	Clamping Capacity	Throat Depth	Clamping Force	Approx. Weight	MSRP
	inch	inch	lbs	lbs	
LC4	4	2 3/8	400	1.10	\$66.15
LC8	8	4	660	2.45	\$88.75
LC12	12	5 1/2	1200	4.95	\$110.30
LC20	20	4 3/4	1200	5.80	\$122.15
LC31	31	4 3/4	1200	6.95	\$132.90



FROM
66¹⁵



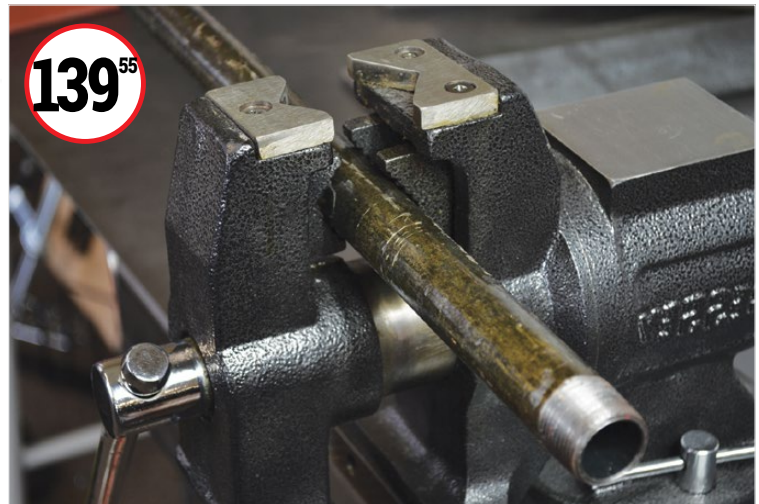
Q3 2025 Promotion

Multi-purpose vise (rotating pipe & bench vise)

- Bolt to the top surface of your bench and lock your workpiece in place with the heavy duty jaws
- Base swivels 360°
- 3 mounting holes and 2 lockdowns
- Pipes are no problem with the serrated jaws that rotate 360°
- Made with a ductile iron body for durability
- Built-in anvil



Product Number	Jaw Width	Jaw Opening	Throat Depth	Pipe Capacity	Approx. Weight
	inch	inch	inch	inch	lbs
BV-MPV5	5	5	2 3/4	2	29

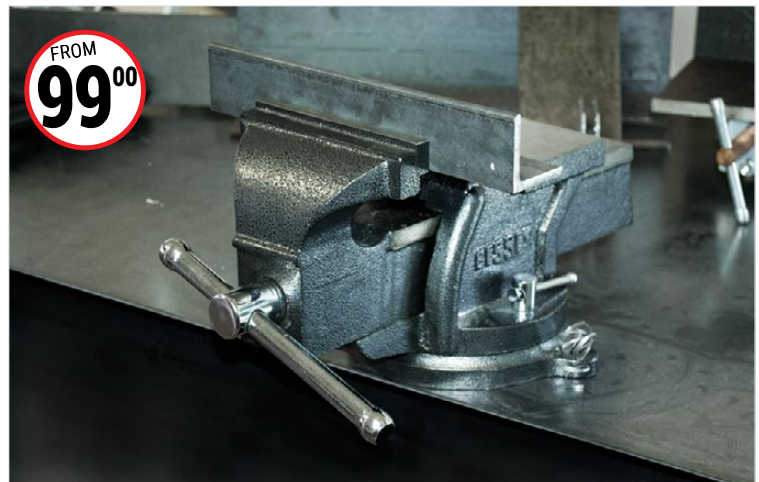


Heavy duty bench vise

- Simply bolt this vise to the top surface of your bench and lock your workpiece in place with the heavy duty serrated jaws
- Base swivels 360°
- 3 mounting holes and 2 lockdowns
- Made with a ductile iron body for durability
- Built-in anvil



Product Number	Jaw Width	Jaw Opening	Throat Depth	Approx. Weight	MSRP
	inch	inch	inch	lbs	
BV-HD40	4	4	2	13	\$99.00
BV-HD60	6	6	2 3/8	27	\$129.55

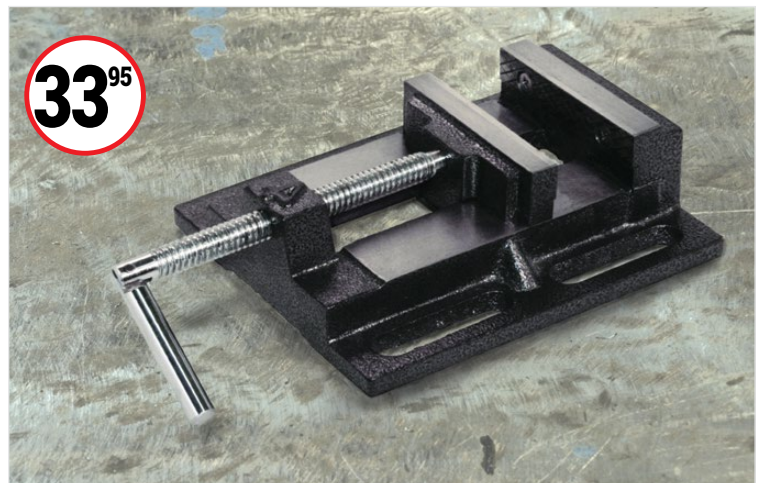


Drill press vise

- Malleable cast iron body with a powder coated finish
- Machined spindle
- Grooved jaw provides a firm, secure, grip
- Elongated holes for easy fastening



Product Number	Jaw Width	Jaw Opening	Throat Depth	Approx. Weight
	inch	inch	inch	lbs
BV-DP40	4	4	1	11



SIMPLY BETTER.



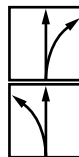
Q3 2025 Promotion

Offset snips, optimized, D29ASS-2

- High grade steel cutting blades with compact cutting head for high manoeuvrability
- Use 25% less effort with the optimized leverage
- Right or left cutting versions available
- HRC up to 61



Product Number	Overall Length	Blade Length	Cutting Capacity (carbon steel)	Approx. Weight	MSRP
	lbs	inch	gauge	lbs	
D29ASS-2	10 1/4	1 7/8	18	1.16	\$48.70
D29ASSL-2	10 1/4	1 7/8	18	1.16	\$48.70



Long-nose, multi-purpose snip, D22A

- High grade steel
- Extra long cutting blades for continuous cuts and large radius cuts
- Angled cutter heads keep hands free from work
- Available in left cutting version only
- HRC up to 59



Product Number	Overall Length	Blade Length	Cutting Capacity (carbon steel)	Approx. Weight
	lbs	inch	gauge	lbs
D22A	10 1/2	2 1/2	18	1.01



Folding utility knife – Wood handle

- Includes folding and locking blade with belt-clip
- Uses standard blades that are easy to change with the quick blade exchange mechanism
- Spring blade release



Product Number	Overall Length	Blade Length	Approx. Weight
	lbs	inch	lbs
D-BKWH	6 1/4	2 1/4	0.39



Q3 2025 Promotion



Welding table clamp, variable throat depth, TWV16

16 mm hole diameter for up to 550 lbs of clamping force

- Clamping with variable height and adjustable throat depth
- Tempered profile rail and sliding arm for strong, dependable clamping
- Available with: high quality 2-component plastic handle; T-Bar with rounded ends (with ACME threaded spindle); or lever handle with a ratcheting mechanism for controlled, fast and vibration-proof clamping.

Product Number	Handle Style	Clamping Capacity	Nominal Throat Depth	Clamping Force	Approx. Weight	MSRP
		inch	inch	lbs	lbs	
TWV16-20-15-2K	Composite	8	1 ³ / ₁₆ - 6	550	2.50	\$65.15
TWV16-20-15K	T-Bar	8	1 ³ / ₁₆ - 6	550	2.34	\$65.15
TWV16-20-15H	Lever	8	2 ³ / ₈ - 6	550	2.72	\$87.45



Welding table clamp, variable throat depth, TWV28

28 mm hole diameter for up to 1100 lbs of clamping force

- Clamping with variable height and adjustable throat depth
- Tempered profile rail and sliding arm for strong, dependable clamping.
- Available with: high quality 2-component plastic handle; T-Bar with rounded ends (with ACME threaded spindle); or lever handle with a ratcheting mechanism for controlled, fast and vibration-proof clamping

Product Number	Handle Style	Clamping Capacity	Nominal Throat Depth	Clamping Force	Approx. Weight	MSRP
		inch	inch	lbs	lbs	
TWV28-30-17-2K	Composite	12	1 ⁹ / ₁₆ - 6 ⁷ / ₈	1100	4.89	\$82.10
TWV28-30-17K	T-Bar	12	1 ⁹ / ₁₆ - 6 ⁷ / ₈	1100	4.65	\$82.10
TWV28-30-17H	Lever	12	4 ⁵ / ₁₆ - 6 ⁷ / ₈	1100	5.47	\$103.30

