



# GL parting & grooving

---

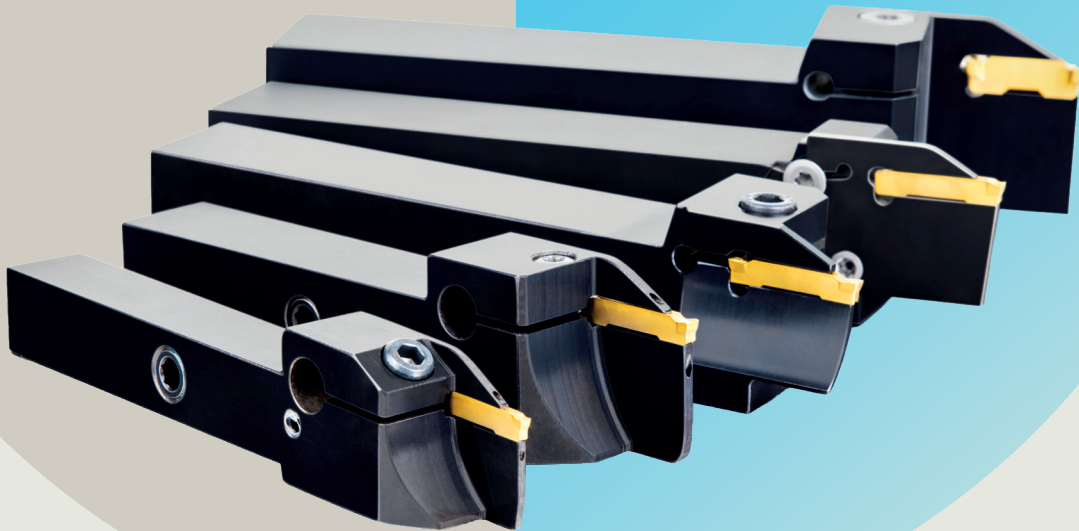
## Special Discount

June 15 – October 30, 2026

Purchase 10 inserts,  
get a 50% discount  
on the holder.

or

purchase 20 inserts,  
get the holder FREE.



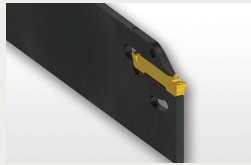
**Certainty  
at every turn™**

Authorised  
distributor

  
**AFC Tooling**  
AFCTooling.com

# GL grooving & parting-off tools

## GLS B



### Double-Ended Parting-off and Grooving Blade for GL Inserts

Blade for GL inserts, suited for parting-off and grooving applications. Easy inserts replacement by specific key (included in package). Can be fitted into the DU, D tool block. Body treated for longer tool life.

## IGLAF(RL) EXT



### Grooving and Parting-Off tool with internal coolant for GL Inserts

External Right/Left handed tool holder with internal coolant for GL inserts. Suited for radial grooving, parting-off, turning and profiling applications. Reinforced body design for longer tool life and low vibrations. Body treated for longer tool life. Available in inch and metric sizes.

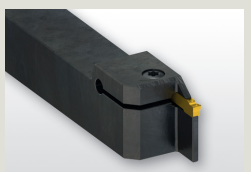
## IGLSF(RL) EXT



### Grooving and Parting-Off tool for GL Inserts

External Right/Left handed tool holder for GL inserts. Suited for radial grooving, parting-off, turning and profiling applications. Reinforced body design for longer tool life and low vibrations. Body treated for longer tool life.

## IGLSF(RL) EXT-G



### Grooving and Turning tool for GL Inserts

External Right/Left handed tool holder for GL inserts. Best suited for longitudinal turning and profiling applications, usable also for grooving and parting-off. Body treated for longer tool life.

## GLSF L-R AXIAL



### Axial Face Grooving tool for GL inserts

Left handed axial face grooving tool holder for GL inserts. Suited for face grooving, turning and profiling applications. Body treated for longer tool life.

## GLSG R-R AXIAL



### Radial Face Grooving tool for GL inserts

Right handed radial face grooving tool holder for GL inserts. Suited for face grooving, turning and profiling applications. Body treated for longer tool life.

## GLS BS



### Grooving and Parting-off Blade for GL Inserts, for MS-EN Tool Holder

Blade for modular tool holder MS-EN, designed for GL inserts. Suited for grooving and parting-off applications. Blades treated for longer tool life.

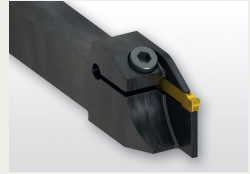
## IGLAF(RL) EXT-S



### Grooving tool with internal coolant for GL Inserts, for Sliding head machines

External Right/Left handed tool holder with internal coolant for GL inserts, designed for sliding head machines and easy access to insert clamping. Suited for radial grooving, parting-off, turning and profiling applications. Body treated for longer tool life. Available in inch and metric sizes.

## IGLSF(RL) EXT-S



### Grooving and Parting-Off tool for GL Inserts, for Sliding head machines

External Right/Left handed tool holder for GL inserts, designed for sliding head machines and easy access to insert clamping. Suited for radial grooving, parting-off, turning and profiling applications. Body treated for longer tool life.

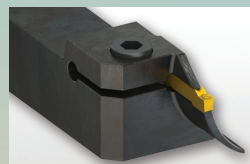
## GLAG (RL) INT



### Internal Grooving tool for GL inserts

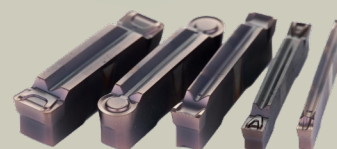
Internal Right/Left handed tool holder with internal coolant for GL inserts, designed with reinforced seating and blade for security. Suited for internal grooving, turning and profiling applications. Body treated for longer tool life.

## GLSF R-L AXIAL



### Axial Face Grooving tool for GL inserts

Right handed axial face grooving tool holder for GL inserts. Suited for face grooving, turning and profiling applications. Body treated for longer tool life.



Learn more about our newest GL products



See our GL products online



To take advantage of this offer, use **Promo Code: GROOVE 2026** when ordering. Offer is not valid on purchases made by Eshop or EDI.